



CERTIFIED FALL PROTECTION SYSTEMS

A HIGHER STANDARD OF SAFETY





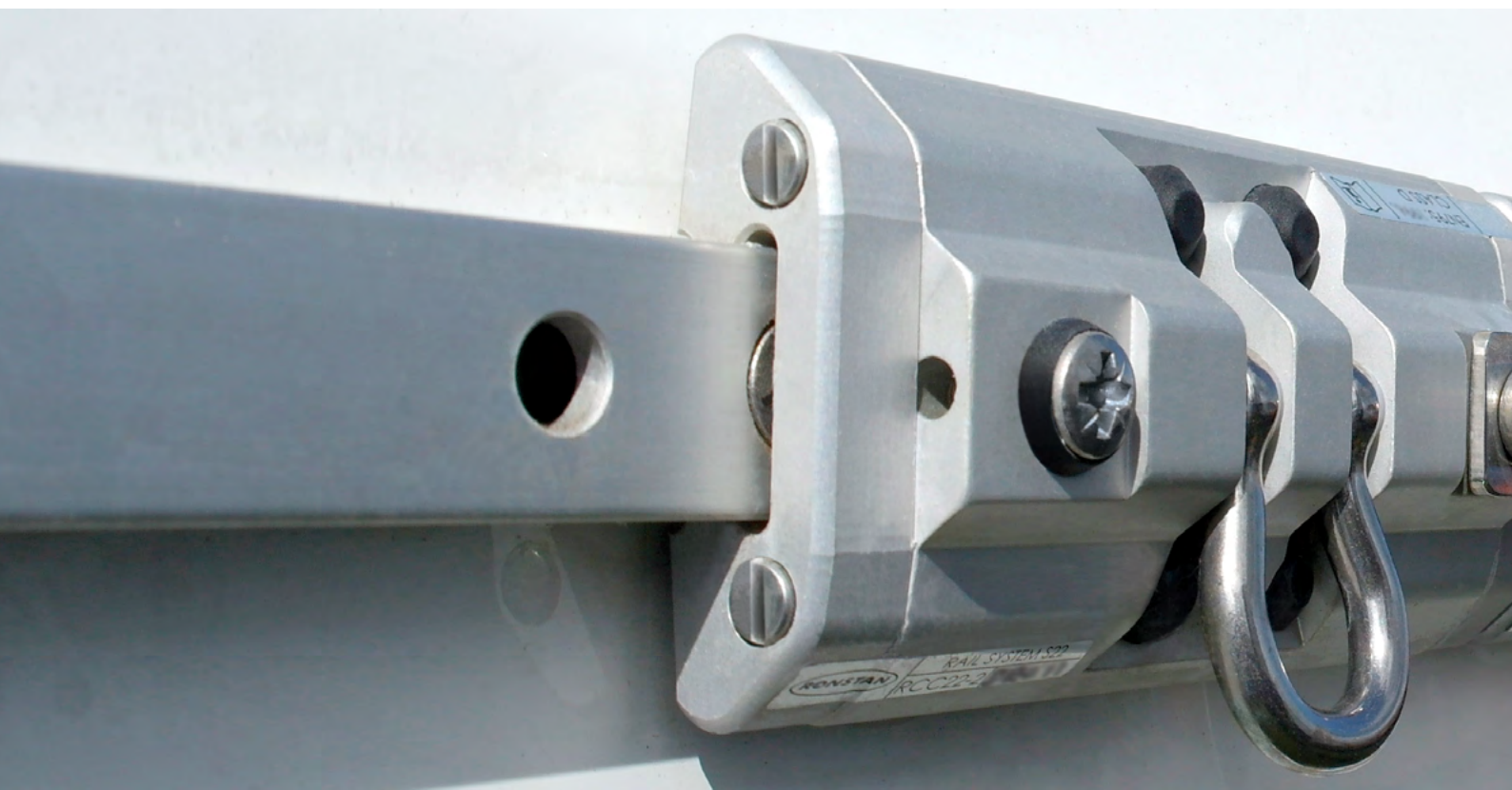
FALL PROTECTION SYSTEMS

A higher standard of safety

Track and car systems and single point anchorage systems have long been used to provide a mobile attachment point for crew when cleaning the hull, superstructure and windows of large motor yachts and other vessels.

With today's greater awareness of workplace risks, boat builders and surveyors are seeking to ensure a high standard of safety by specifying systems that are purpose designed, tested and standards-approved.

Ronstan supports this approach, which can only improve the safety and security of the persons using these systems in their everyday work, and has developed Safety Rail & Single Point Anchorage systems which have been tested to the relevant European and Australian Standards. Testing for conformity to these standards is witnessed by a Recognised Organisation, member of the International Association of Classification Societies (IACS).



PURPOSE

Ronstan Fall Protection Systems provide a method of attachment for use in conjunction with personal protection equipment to protect against falls from a height, such as when working outside of conventional guardrails for cleaning and maintenance purposes on motor yachts or other vessels. They should not be used for any other purpose.

FEATURES

SAFETY RAIL SYSTEMS

- Certified to European Standard EN795:2012, Type D for single person use (S22 system also certified to European Technical Specification CEN/TS16415:2013 Type D for multiple users and Australian Standard AS1891.2:2001, Part 2).
- Marine grade aluminium alloy cars, track rails and end stops, anodised for corrosion protection and long service life.
- Recirculating Torlon®* ball bearings for free running, low friction performance and low maintenance.
- Grade 316 forged stainless steel pivoting shackles for lanyard attachment.
- Rubber buffers for reduced vibration and to lift pivoting shackles away from car body for quick access.
- Spring-loaded stainless steel plunger for simple, positive repositioning at stop locations. Can be locked in the disengaged position to allow free movement along the track rail. The elliptical knob is easy to grip and turn, and indicates clearly whether the plunger is engaged or not.

SINGLE POINT ANCHORAGE SYSTEMS

- Removable Screw-In padeye anchorages are certified to the European standard EN795:2012, Type A, as well as the Australian standards AS1891.4.2009 & AS5532:2013.
- Marine grade 316 stainless steel structural anchor base, screw-in anchor device and identification plate.
- Identification plate features the unique serial number.
- The screw-in anchor device can be removed from the structural anchor base when not in use for safety or maintenance. It should always be locked to the base when in use using the locking screw.

*Torlon® is a registered trademark of Solvay Advanced Polymers



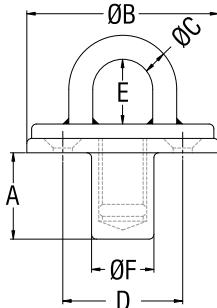
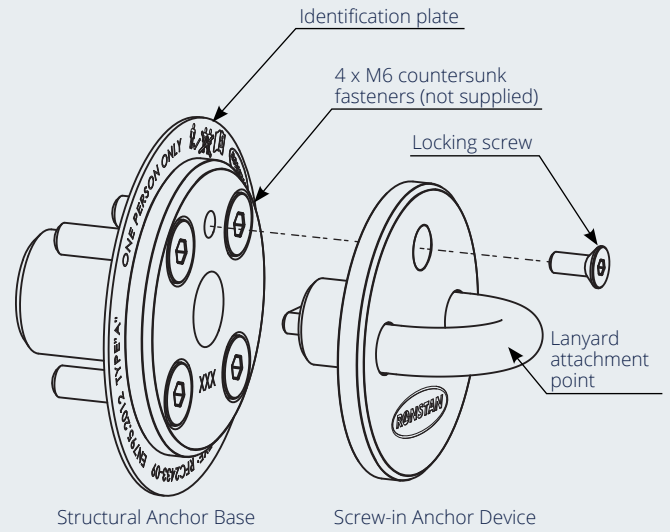


SCREW-IN PADEYE Removable

SCREW-IN PADEYE, SYSTEM DESCRIPTION

The Removable Screw-In Padeye Anchor Device consists of two parts:

- A structural anchor base which is permanently fixed to the structure.
- A screw-in anchor for connection of personal protection equipment.
 - » The structural anchor base is to be permanently fastened to the structure using 4 x M6 fasteners.
 - » The screw-in anchor is attached to the structural anchor base by means of a central threaded spigot. Once fully threaded in place the anti-rotation locking screw must be engaged to ensure that the anchor cannot unintentionally become detached from the structural anchor base.
 - » The screw-in anchor has a single attachment point for personal protection equipment.



- ✓ Certified to European Standard EN795:2012 Type A and Australian Standards AS1891.4:2009 & AS5532:2013.
- ✓ Separate locking screw ensures that the screw-in lanyard attachment remains secure when in use.
- ✓ Grade 316 stainless steel throughout for maximum corrosion resistance and longevity.
- ✓ A threaded plug remains in the base when the screw-in anchor device is removed to prevent dirt and grit from entering the threads.

PRODUCT No.	DESCRIPTION	A mm	B mm	C mm	D mm	E mm	F mm	WEIGHT g
Removable Screw-In Padeye anchor device								
RFC2433-09	Certified, Screw-In Padeye, 9mm Bar	29.0	70	9.0	26.9	14.0	23.2	303

PRODUCT No.	DESCRIPTION	A in	B in	C in	D in	E in	F in	WEIGHT oz
Removable Screw-In Padeye anchor device								
RFC2433-09	Certified, Screw-In Padeye, 11/32" Bar	1 5/32	2 3/4	11/32	1 1/16	9/16	29/32	10.7



SAFETY RAIL SYSTEMS Description & Advice

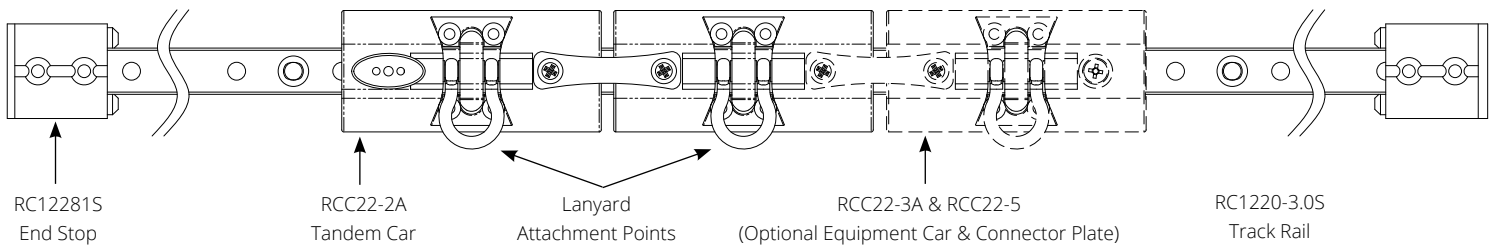
SAFETY RAIL, SYSTEM DESCRIPTION

The complete Safety Rail System consists of the following components:

- One track rail with stop holes at 50mm centres and mounting holes at 100mm centres (centre of the last mounting hole at each end of the track rail is located 48mm from the end).
- One tandem sliding car assembly consisting of two cars joined together with a connecting plate (or, for a S22 system, up to a maximum of three tandem car assemblies for up to three simultaneous users).
 - Each car has a single attachment point for personal protection equipment.
 - One of the cars has a spring-loaded plunger to allow the assembly to be fixed in position at any of the stop holes in the track rail. This plunger can be disengaged to allow free movement of the car assembly along the rail.
- Two end stops installed at the extremities of the track rail.

OPTIONS

- Longer runs can be achieved by using more than one section of track rail and trimming to length as required, provided that the distance between mounting fasteners never exceeds 100mm. The joining insert should be used to aid alignment when fitting multiple sections of track rail.
- Additional sliding cars for supporting tools or equipment can be connected to the main tandem car with the connector plate.
- Optional end stop cover plates.
- Black or silver anodised cars and track.



IMPORTANT ADVICE

Ronstan Fall Protection Systems are tested and certified to relevant European and Australian Standards and are appropriate for single person use (or, for S22 Safety Rail Systems, up to a maximum of three simultaneous users) with an energy absorber to the EN355 standard. They must only be used with personal protection equipment (harnesses, lanyards, fall arresters and other devices) that are approved to the relevant standards for such equipment. Each harness or device must be secured to a separate attachment point.

Full product range details can be found on the Ronstan web site, at www.ronstan.com. Installation, usage and maintenance information is available under the SUPPORT tab on the site.

Track rail mounted in vertical plane



Track rail mounted in horizontal plane





SAFETY RAIL SYSTEMS Series 22



Full installation, usage and maintenance details available under the **SUPPORT** tab of the Ronstan website.

- ✔ Certified to European Standard EN795:2012 Type D and European Technical Specification CEN/TS16415:2013 Type D for a maximum of three simultaneous users, and Australian Standard AS1891.2.2001, Part 2.
- ✔ Low friction.
- ✔ Anti-clatter rubber buffers.
- ✔ Lock up/down track position plunger stop.
- ✔ Anodised aluminium car bodies and track.
- ✔ Torlon®* ball bearings.
- ✔ Grade 316 shackle, plunger stop, pivot pin, fasteners and connector plate.

PRODUCT No.	DESCRIPTION	LENGTH mm	WIDTH mm	WEIGHT g	LENGTH in	WIDTH in	WEIGHT oz
Series 22 Safety Rail System							
RCC22-1A	Single car, 1 attachment point, plunger stop, silver	124	58	252	4 7/8	2 5/16	8.9
RCC22-1AB	Single car, 1 attachment point, plunger stop, black	124	58	252	4 7/8	2 5/16	8.9
RCC22-2A	Tandem car, 2 attachment points, plunger stop, silver	254	58	504	10	2 5/16	17.8
RCC22-2AB	Tandem car, 2 attachment points, plunger stop, black	254	58	504	10	2 5/16	17.8
RCC22-3A	Single car, 1 attachment point, silver	124	58	234	4 7/8	2 5/16	8.3
RCC22-3AB	Single car, 1 attachment point, black	124	58	234	4 7/8	2 5/16	8.3
RCC22-5	Connector plate, including screws	-	-	37	-	-	1.3
RC1221J	Track rail joiner	-	-	4	-	-	0.1
RC12281S	Track rail end stop, silver	50	45	50	1 31/32	1 25/32	1.8
RC12281	Track rail end stop, black	50	45	50	1 31/32	1 25/32	1.8
RC1220-3.0S	Track rail, silver, 2996mm	2996	22	1380	117 15/16	7/8	48.7
RC1220-3.0	Track rail, black, 2996mm	2996	22	1380	117 15/16	7/8	48.7
RC12281P	End stop cover plate, including screws, black	-	45	5	-	1 25/32	0.2
RC12281PS	End stop cover plate, including screws, silver	-	45	5	-	1 25/32	0.2

*Torlon® (is a registered trademark of Solvay Advanced Polymers).



SAFETY RAIL SYSTEMS Series 30



Full installation, usage and maintenance details available under the **SUPPORT** tab of the Ronstan website.

- ✔ Certified to European Standard EN795:2012 Type D for single person use.
- ✔ Low friction.
- ✔ Anti-clatter rubber buffers.
- ✔ Lock up/down track position plunger stop.
- ✔ Suitable for curved track installations with a radius of no less than 2500mm (8'2")
- ✔ Anodised aluminium car bodies and track.
- ✔ Torlon®* ball bearings.
- ✔ Grade 316 shackle, plunger stop, pivot pin, fasteners and connector plate.

PRODUCT No.	DESCRIPTION	LENGTH mm	WIDTH mm	WEIGHT g	LENGTH in	WIDTH in	WEIGHT oz
Series 30 Safety Rail System							
RCC22-4	Connector plate, including screws	-	-	37	-	-	1.3
RCC30-1A	Single car, 1 attachment point, plunger stop, silver	104	77	364	4 1/8	3	12.9
RCC30-1AB	Single car, 1 attachment point, plunger stop, black	104	77	364	4 1/8	3	12.9
RCC30-2A	Tandem car, 2 attachment points, plunger stop, silver	215	77	720	8 1/2	3	25.4
RCC30-2AB	Tandem car, 2 attachment points, plunger stop, black	215	77	720	8 1/2	3	25.4
RCC30-3A	Single car, 1 attachment point, silver	104	77	328	4 1/8	3	11.6
RCC30-3AB	Single car, 1 attachment point, black	104	77	328	4 1/8	3	11.6
RC1301J	Track rail joiner	-	-	10	-	-	0.4
RC13081S	Track rail end stop, silver	58	55	89	2 9/32	2 3/16	3.1
RC13081	Track rail end stop, black	58	55	89	2 9/32	2 3/16	3.1
RC1300-3.0S	Track rail, silver, 2996mm	2996	30	2430	117 15/16	1 3/16	85.7
RC1300-3.0	Track rail, black, 2996mm	2996	30	2430	117 15/16	1 3/16	85.7
RC13081P	End stop cover plate, including screws, black	-	55	16	-	2 3/16	0.6
RC13081PS	End stop cover plate, including screws, silver	-	55	16	-	2 3/16	0.6

*Torlon® (is a registered trademark of Solvay Advanced Polymers).



IMPORTANT ADVICE

Ronstan Fall Protection Systems are tested and certified to relevant European and Australian Standards and are appropriate for single person use (or, for S22 Safety Rail Systems, up to a maximum of three simultaneous users) with an energy absorber to the EN355 standard. They must only be used with personal protection equipment (harnesses, lanyards, fall arresters and other devices) that are approved to the relevant standards for such equipment. Each harness or device must be secured to a separate attachment point.

Full product range details can be found on the Ronstan web site, at www.ronstan.com.
Installation, usage and maintenance information is available under the SUPPORT tab on the site.

AUSTRALIA

19 Park Way,
Braeside 3195, Victoria
office@ronstan.com.au
+61 (0)3 8586 2000

USA

1170 East Main Rd #3
Portsmouth, RI 02871
office@ronstan.us
+1 (401)-293-0539

DENMARK

Jaegervaeget 36,
DK-7100 Vejle
office@ronstan.dk
+45 76 42 77 77

A large, modern white yacht is shown from a side profile, sailing on a deep blue sea under a clear sky. The yacht has a prominent cabin with large windows and a radar scanner on top. The background shows a coastline with buildings and hills.

**CERTIFIED FALL
PROTECTION SYSTEMS**
A HIGHER STANDARD OF SAFETY